

Horse, Beef, Swine & Food/Nutrition Invitational Quiz Bowl

TEXAS A&M
AGRILIFE
EXTENSION



Saturday

January 9, 2016

Walker County Storm Shelter

455 State Highway 75N
Huntsville, TX 77320

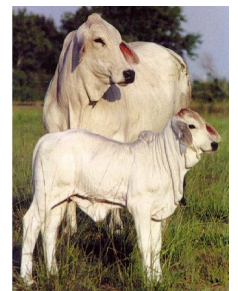
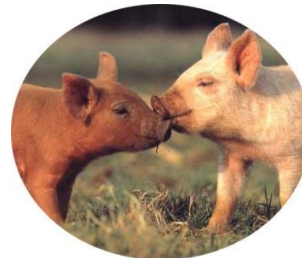
Registration Open until 9:20 a.m.

Food/Nutrition Bowl @ 9:30 a.m.

Beef Bowl @ 11:00 a.m.

Swine Bowl @ 12:00 p.m.

Horse Bowl @ 1:30 p.m.



- Junior and Senior Divisions
- Questions taken from the Texas 4-H Reference List
- Cost \$40/team. Register as a team online through 4-H Connect no later than Friday January 1st. (\$60 on-site).
 - ✓ FFA Members and Parents: enter online using 4-H Connect. No 4-H Membership Required
 - ✓ 4-H Members and Parents: Enter through 4-H Connect using your 4-H enrollment account
 - ✓ Register on Site: Register day of contest at increased price

**\$200 to overall winning team of Beef, Horse,
Swine, and Food/Nutrition Bowls. Plus prizes for each age
division winner!!**

*More info at: <http://d94-h.tamu.edu/eventsandcontests/bigtime/quiz-bowls/>
Questions? Contact Kristy Titzman at 936-435-2426 or kkcorley@ag.tamu.edu*